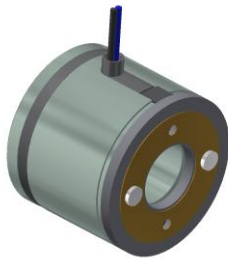
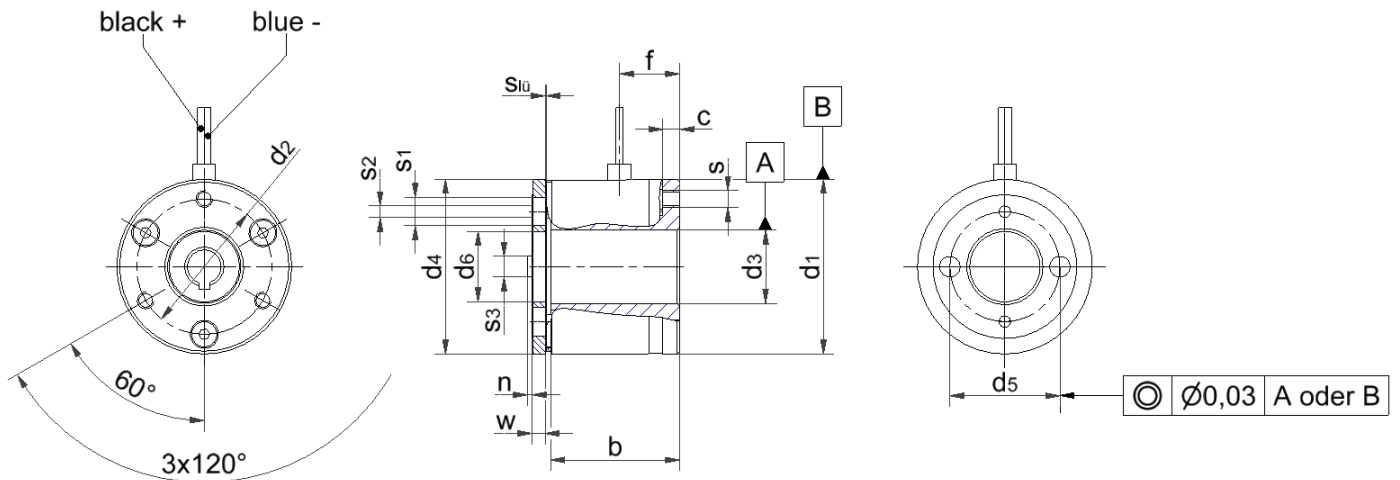


## Permanent Magnet Brake Type 14.120...203



Connection cable 400 mm long  
UL-Style 1007/1569 CSA-TR64  
Size: AWG 26

Size	M <sub>min</sub> [Nm]	b	c	d <sub>1</sub> h <sub>10</sub>	d <sub>2</sub>
03	0,6	23,7	3	31	24
05*					

Size	d <sub>3</sub> H <sub>10</sub>	d <sub>4</sub>	d <sub>5</sub>	d <sub>6</sub>	f	n	w
03	13	31	19,5	12,5	10,7	0,8	2,3
05*							

Size	s	s <sub>1</sub>	s <sub>2</sub>	s <sub>3</sub>	Slü	P <sub>20°C</sub> [W]
03	M3	2 x 5	2 x 2,1	2 x 3,7	0,15+0,1/-0,05	10
05*						

Dimensions in mm  
Standard voltage 24V +5%/-10% according to VDE 0580  
Temperature class B (130°C)  
\* Size 05: tbd